

Victoria PARK at Walkersville

Brand NEW Apartments for Seniors

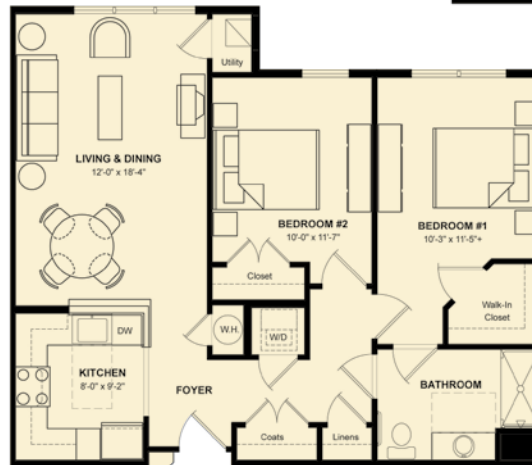
105 Sandstone Drive
Walkersville, MD 21793

Apartment and Community Features include:

- ❖ Washer/dryer hookups in every apartment
- ❖ Individually controlled heat & A/C
- ❖ Fully equipped kitchens including dishwasher & disposal
- ❖ Grab bars in bathrooms
- ❖ Pre-wired for cable TV & internet
- ❖ Handicapped adaptable
- ❖ Hospitality suite
- ❖ Library, community room, & theater
- ❖ Florida room & outdoor patios
- ❖ Fitness center & game room
- ❖ Health & wellness seminars
- ❖ Social & cultural activities
- ❖ Small pets welcome

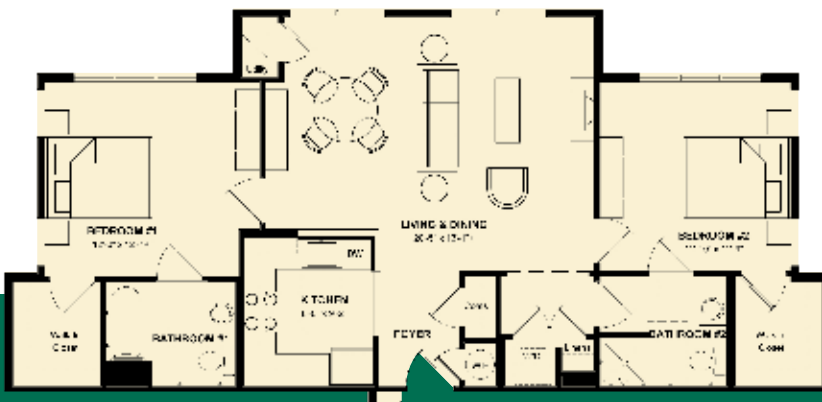
Income guidelines apply

Plan 1A 1 Bedroom, 1 Bath 657 s.f.



Typical plans shown;
other styles also available.
All measurements and
square footages are
approximate and
variations may occur.

Plan 2A 2 Bedroom, 1 Bath 890 s.f.



Plan 2E 2 Bedroom, 2 Bath 1,040 s.f.



301-845-4885

TTY/Voice: 711

